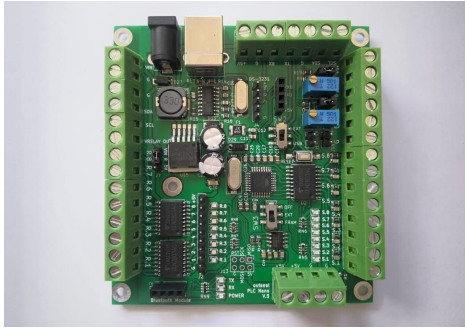


Brosur Produk Outseal

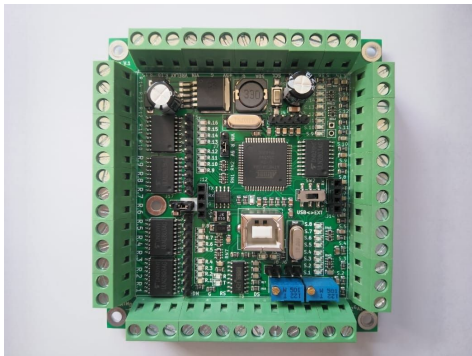
12 Mei 2020

Outseal PLC



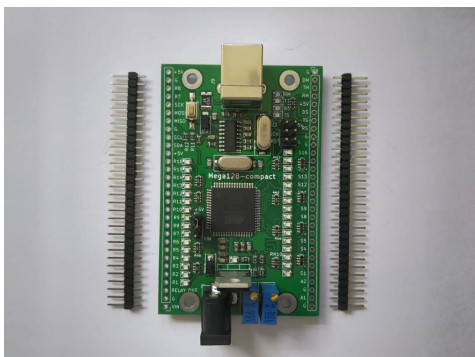
Outseal PLC nano V.5

Dimensi: 87mmx93mm



Outseal PLC mega V.1

Dimensi: 87mmx93mm



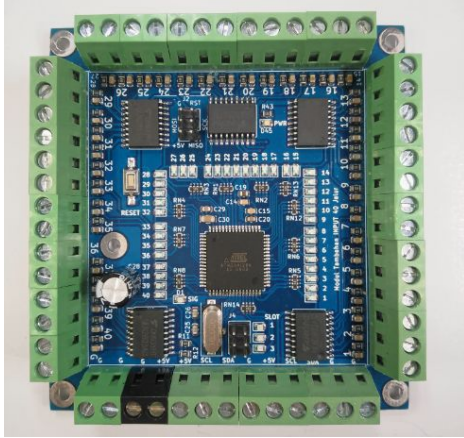
Outseal PLC megaV.1 Compact

Dimensi: 56mmx79mm

Perbandingan

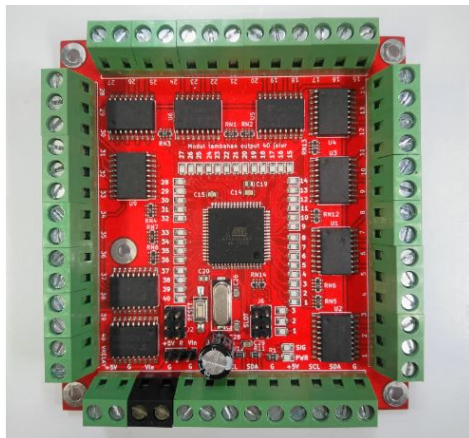
Spec	Nano V.5	Mega V.1	Mega V.1 Compact
Kapasitas Flash	32kB	128kB	
Jumlah Digital Input	8	16	
Teknis Digital Input	Berjenis Sinking 5 - 24VDC		
Jumlah Digital Output	8	16	
Teknis Digital Output	NPN open collector 5 - 28V		
	100 mA/channel		50 mA/channel
High Speed Counter	1 Channel	2 Channel	
Non inverted TTL out	Ada (pin header)		Tidak ada
Analog	2 jalur (0-5V atau 0-20mA)		
Komunikasi	1 Serial Port (Slave/Master)	2 Serial Port (slave dan master)	
Direction pin (untuk RS485 Converter)	Tidak ada	Ada	
Supply Step Down (Regulator)	Switching buck converter Max 24V		Linear regulator Max 12V
Nonvolatile memory	FRAM EEPROM		EEPROM
Kabel program	USB type B (untuk printer)		
Konektor	Screw Terminal		Pin header 2,54 mm
Konektor Modul	Bluetooth module HC05/HC06 Setting Bluetooth module HC05/HC06 RTC DS3231		
6pin konektor ISP	ada	Tidak ada	ada

Modul I2C



Digital Input 40 Bit

Dimensi: 87mmx93mm



Digital Output 40 Bit

Dimensi: 87mmx93mm